



## **Request for Qualifications Percent for Art / Oregon State Treasury Resiliency Building Salem, Oregon**

Through the Oregon Arts Commission's Art in Public Places Program, Oregon State Treasury (OST) seeks to commission artworks for the interior and exterior of a new building to be called the "Resiliency Building," in Salem, Oregon. Artists are invited to submit their qualifications for consideration. The RFQ solicitation process is to be inclusive, encouraging a diverse selection of artists to apply, including those who are Black, Indigenous, and other people of color; LGBTQ+; and emerging artists.

Deadline to Apply: **August 31<sup>st</sup>, 2020 at 6 p.m.**

Budget: **\$270,000**, potentially for multiple commissions.

### **Oregon State Treasury**

Oregon State Treasury's focus is on improving the financial well-being of all Oregonians. OST provides low-cost programs for governments, and empowers Oregonians to invest in themselves and their loved ones for a more secure future.

### **The Resiliency Building**



Building rendering by GBD Architects

**Resilient** is an adjective that means "able to withstand or recover quickly from difficult conditions." The Resiliency Building is designed to resist and embrace the hazards of earth, wind and fire, and includes strategies to mitigate infectious disease.

The Oregon State Treasury Resiliency building will provide office space for approximately 130 Treasury employees. It is a 2-story, 36,000sf state of the art resilient building designed to withstand

a 9.0 earthquake without damage. The building is designed to meet sustainability benchmarks including Net Zero (produces more energy than consumes), and the equivalent of LEED Gold. Guiding design principles will lead the building to be: biophilic; structurally safe and readily occupiable after a disaster; sustainable and high performing; high quality, durable and smart; inviting and comfortable; and practical and modest. The building will also be extremely energy efficient, able to generate and store power onsite and be long lasting with low maintenance requirements.

## Art Locations

The selection committee is interested in having artists consider site-specific artworks at selected exterior and interior locations. Shortlisted artists will be invited to attend a presentation where they will learn more about the building and available opportunities. Some options for locations are included on the final pages of this call.

## Potential Themes, Values, and Goals

- Resilience
- Participatory and/or functional
- Relating to place and heritage locally and/or throughout Oregon
- Educational
- Sustainable with minimal impact on environment and minimal upkeep required over time
- Long-run potential, consider future generations
- Biophilic or integrated with nature

## Project Notes/Considerations

- The process of designing for resiliency through sustainability strategies ultimately led to net zero energy consumption.
- The building structure is decoupled from the foundation. It will be resilient and strong in an earthquake because it has flexibility.
- Building will have multiple uses: be offices for Treasury business on a day to day basis, and be a headquarters in an emergency.
- Art should not be a hazard or burden in a natural emergency, can it be supportive or beneficial?
- Resilient building systems will be on display, can art highlight or reveal?

## Application Materials

Please follow the file naming protocol requested below to keep your materials together when added to a folder with the submittals of other artists. Also, include your name and contact info on each sheet of your submittal.

- **Letter.** As a PDF file named with “artist’s last name, first initial, letter” (doejletter.pdf). Please provide a short letter describing your interest in this project and how your artwork and art-making process would be a good fit for it. If you are an emerging artist or are desiring to expand your art practice to include public art, please discuss this and how the Resiliency Building project could positively impact your professional growth.
- **Resume.** As a PDF file named with “artist’s last name, first initial, resume” (doejresume.pdf). Two pages maximum. For teams, include resumes of each team member. Please include your complete contact info: street address, phone number, email.
- **Image List.** As a PDF file named with “artist’s last name, first initial, list” (doejlist.pdf). Provide project title, location, date completed, media, dimensions, cost/budget, commissioning agency, project partners, and brief description of the project/conceptual information.

- **Images.** As Jpg files named as follows: “artist’s last name, first initial, number that corresponds to the image information on the image list” (doej01.jpg). Up to ten images of your past work (teams: up to 15 total images of past work). File size: minimum 1200 pixels on the longest side and 4 MB maximum.

**How to Submit Materials**

To be considered for this opportunity, submit your (properly named) materials by **Monday, August 31<sup>st</sup>, 2020 at 6 p.m.**

Send prepared files to this Dropbox folder:

<https://www.dropbox.com/request/HKZZvoljwjn0Sb2tPTuy>

Click on link above or add URL to your search engine’s search bar. Click on plus sign to add your files or drag and drop them into the folder. If you would like to make arrangements to submit your files another way, contact Peg Butler at [peg@pegbutler.net](mailto:peg@pegbutler.net).

**Selection Process**

- Phase 1 - A selection committee appointed for this project will review applications and select finalists for a proposal process.
- Phase 2 – Shortlisted finalists will receive an artist fee of \$1,000 per artist/artist team to attend a project orientation and produce art proposals which will include: concept narrative, schematics (2D and/or 3D), and estimated budget and timeline. Proposals will be presented to committee for review. Orientation and Committee Presentation will most likely be virtual meetings.

**Tentative Schedule**

August 31 <sup>st</sup> , 2020	RFQ submissions due
Early October, 2020	Finalists selected by
Mid-Late October, 2020	Finalist’s project orientation
Early December, 2020	Artist proposal presentations
December, 2020	Artists selected and contracted to begin design development
March, 2021	First design development review
February, 2022	Installation / substantial completion

**Budget**

The project budget of approximately \$270,000 is inclusive of proposal fees, design fees, fabrication, insurance, shipping, travel, installation, documentation and any other project costs.

**Artist Selection Committee**

The selection committee is made up of State Treasury office representatives, the project architect, and business and arts professionals. Oregon Arts Commission project manager Peg Butler is the non-voting committee chair.

Contact Peg Butler with questions at [peg@pegbutler.net](mailto:peg@pegbutler.net).

**Oregon’s Art in Public Places Program**

Oregon was one of the first states in the nation to pass Percent for Art legislation, placing works of art in public spaces throughout the state. The state art collection now includes more than 2,500 artworks: drawings, paintings, mixed media, photography, original prints, sculpture, ceramics, glass, mosaics, murals, textiles, and both site-specific and structurally integrated art installations. More than 1,000 artists have been involved with Percent for Art since its inception, and more than \$6 million has been paid directly to artists. For information about Oregon Arts Commission’s Art in Public Places Program visit: <https://www.oregonartscommission.org/programs/art-public-places>



GBD ARCHITECTS INCORPORATED



LEVEL 1 LOBBY



**Tree Replanting Requirements**

REPLANTING RATIO		
1 TREE PER 1 TREE REMOVED ZONE A (SEE CIVIL PLANS)		
2 TREES PER 1 TREE REMOVED ZONE B (SEE CIVIL PLANS)		
ZONE A TREES TO BE REMOVED: 141 TREES TO BE REPLANTED: 432		
ZONE B TREES TO BE REMOVED: 185 TREES TO BE REPLANTED: 369		
TOTAL TREES TO BE REPLANTED: 759		
Tree	Plant Required	Plant Proposed
	759	759

\*123 TREES PLANTED PHASE I  
 \*157 TREES PLANTED PHASE II  
 \*161 TREES PLANTED OFF-SITE

**Landscape Planting Requirements**

REQUIRED PLANTS	PLANT FEET <sup>2</sup>	SQUARE FEET	PLANT UNIT (PU)
1 MATURE TREE = 15 PU			
1 SHADE TREE = 30 PU			
1 FRESHGREEN TREE = 8 PU			
1 ORNAMENTAL TREE = 2 PU			
1 LARGE SHRUB = 3 PU			
1 SMALL MEDIUM SHRUB = 1 PU			
1 LAWN/GRASS/COVER = 1 PU PER 50 SF			
LANDSCAPE SQUARE FOOTAGE = 79,452 SF			
NUMBER OF REQUIRED PU = 3025 PU			
40% PU REQUIRED AS TREES = 1520 PU			
Plant	# of Plants	Plant Units	
Mature Tree	68	975	
Shade Tree	70	700	
Evergreen Tree	5	25	
Ornamental Tree	48	96	
Large Shrubs	327	254	
Small / Medium Shrubs	888	1888	
Lawn / Groundcover	41,072 SF	1225	

Includes Plants to Remain on Facility

**Legend:**

- (Symbol) EXISTING TREES TO REMAIN
- (Symbol) SEE CIVIL DRAWINGS FOR TREE PROTECTION

**General Notes:**

1. VERIFY ALL UTILITIES AND EASEMENTS. SEE CIVIL DRAWING. NOTIFY LANDSCAPE ARCHITECT OF CONFLICTS.
2. PLANTING UNIT CALCULATIONS SEE SHEET L2.2.
3. STORMWATER QUALITY FACILITIES PLANTING CALCULATIONS, PLANTING PLAN AND NOTES SEE SHEET L2.2.
4. PLANTING DETAILS AND NOTES SEE SHEET L2.3.
5. GENERAL PLANT LEGEND AND RIPARIAN PLANT LEGEND SEE SHEET L2.3.
6. IRRIGATION PLAN SEE SHEET L2.3.

**Laurus Designs, LLC**



1012 Pine Street  
 Silverton, Oregon  
 503.784.4494  
 Project #: L21P



**GBD**

GBD Architects,  
 Incorporated  
 1120 NW Couch St.  
 Portland, OR 97209  
 Tel: 800.224.8816  
 gbd@gbd.com  
 GBD ©

PROJECT  
 TRP

CLIENT  
 PJS Land Development LLC

REGISTERED PROFESSIONAL ARCHITECT  
 NOT FOR CONSTRUCTION  
 OREGON  
 11.16.2007

DATE  
 04/10/2020

PROJECT NUMBER  
 2019E280  
 1216P

SCALE  
 1" = 20'-0"

SHEET TITLE  
 PLANTING PLAN

DATE  
 04/10/2020

PROJECT NUMBER  
 2019E280  
 1216P

SCALE  
 1" = 20'-0"

SHEET TITLE  
 PLANTING PLAN

DATE  
 04/10/2020

PROJECT NUMBER  
 2019E280  
 1216P

SCALE  
 1" = 20'-0"

SHEET TITLE  
 PLANTING PLAN

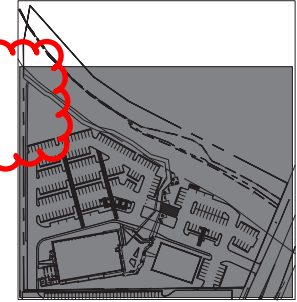
DATE  
 04/10/2020

PROJECT NUMBER  
 2019E280  
 1216P

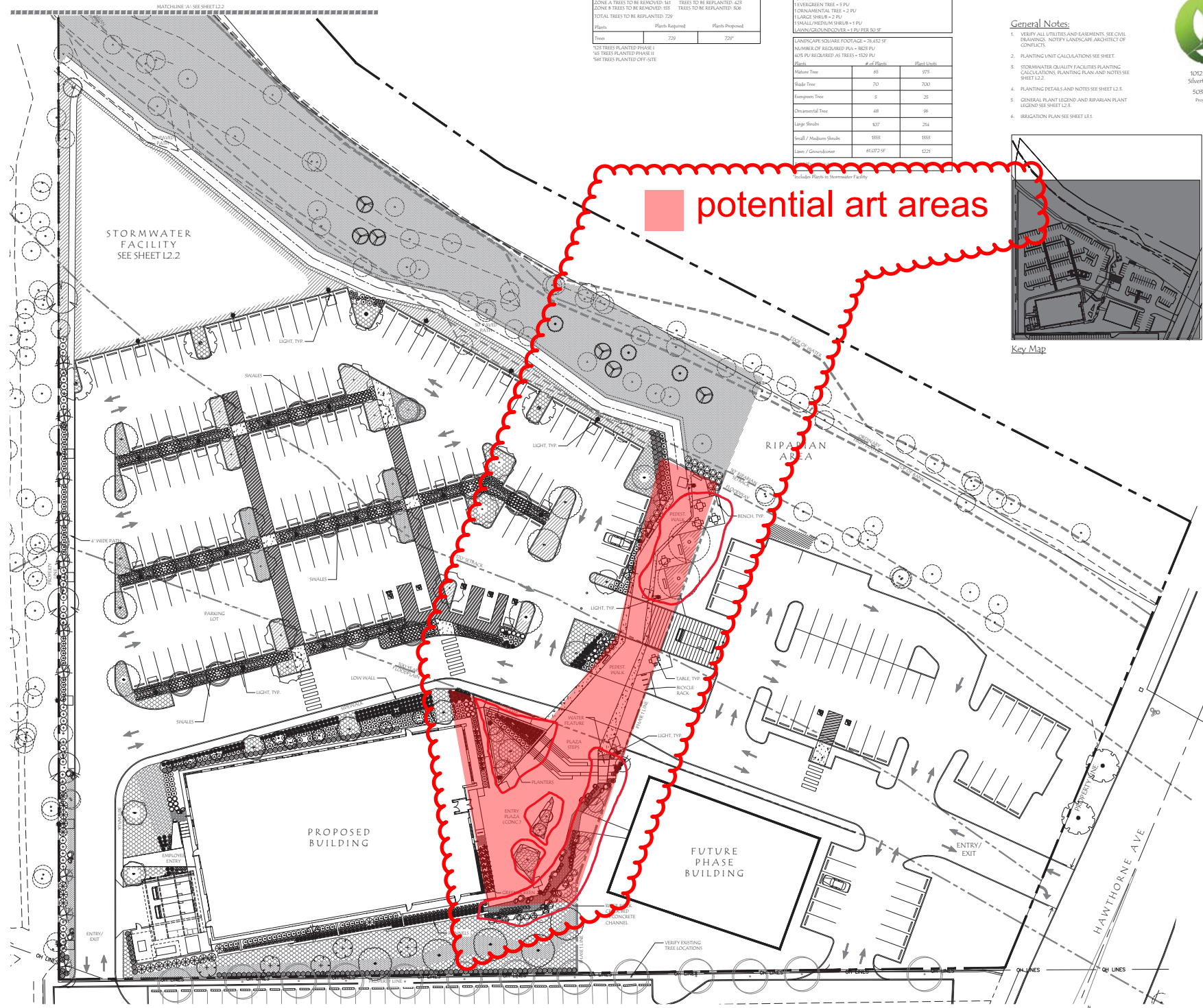
SCALE  
 1" = 20'-0"

SHEET TITLE  
 PLANTING PLAN

potential art areas



Key Map



PLANTING PLAN